

Template for Evidence(s) UI GreenMetric Questionnaire

University : Bursa Uludag University
Country : Turkey
Web Address : <http://www.uludag.edu.tr/english/default>
Web Address for Sustainability Office: <https://uludag.edu.tr/sustainability>

[1] Setting & Infrastructure

[1.8] The ratio of open space area to total area

Bursa Uludag University is a state university and open to public. More than 90% of the spaces of the main campus is open 168 hours a week. Only the closed spaces are open for 40 hours/week. Figure 1 is an aerial photograph of Bursa Uludag University. Figure 2 shows the distribution of the spaces at the main campus.

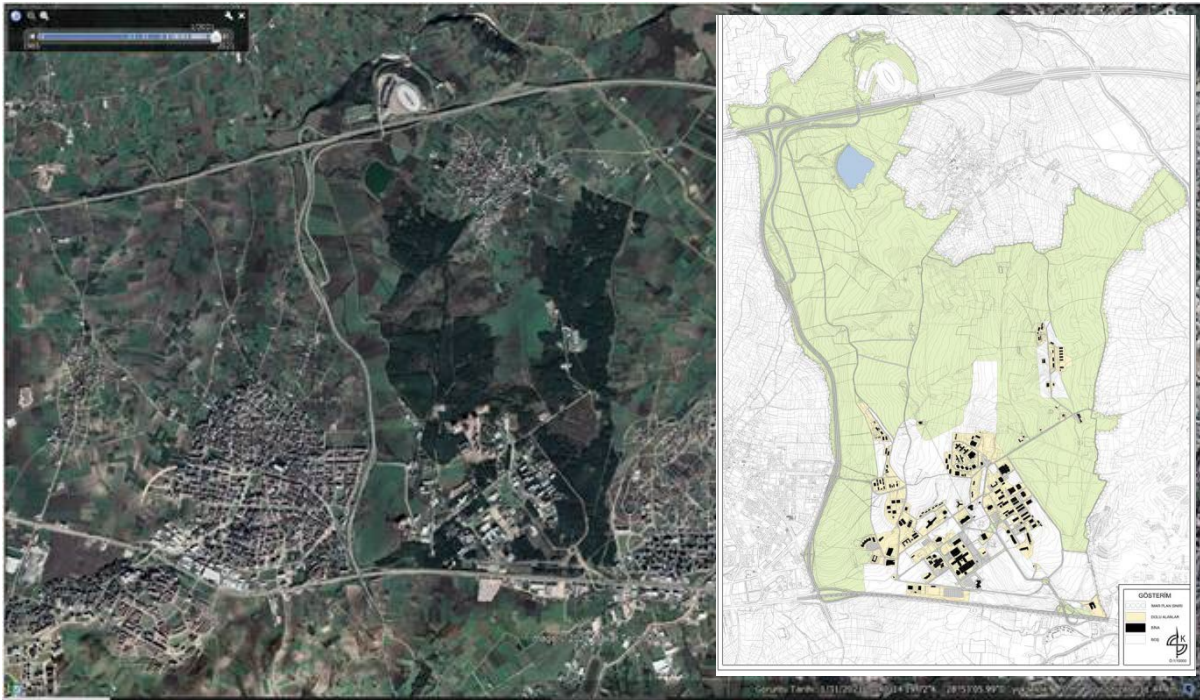


Figure 1. Aerial photo of Bursa Uludag University taken in 2021

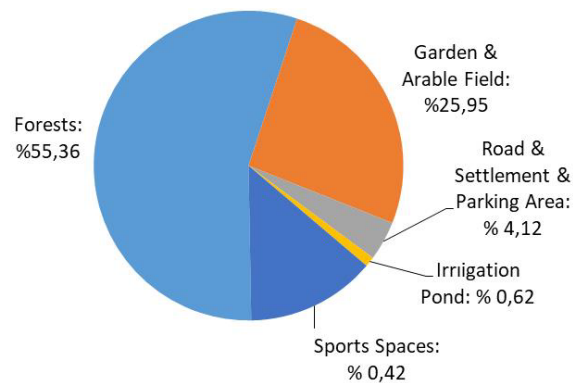


Figure 2. Distribution of the spaces at the Main Campus of Bursa Uludag University

Name of the Open Space	Ground area	Duration (in Hours per Week)
All Open Areas in Figure 2 (Forests, Gardens, Arable Fields, Pond, Roads, Parking Areas, Sports Spaces, etc.) (1.5)	14231310 m ²	168
Closed Areas (buildings etc.) (1.6)	180203 m ²	40

The buildings are also open to the public. However, they are generally closed at the weekends and several hours of the day.

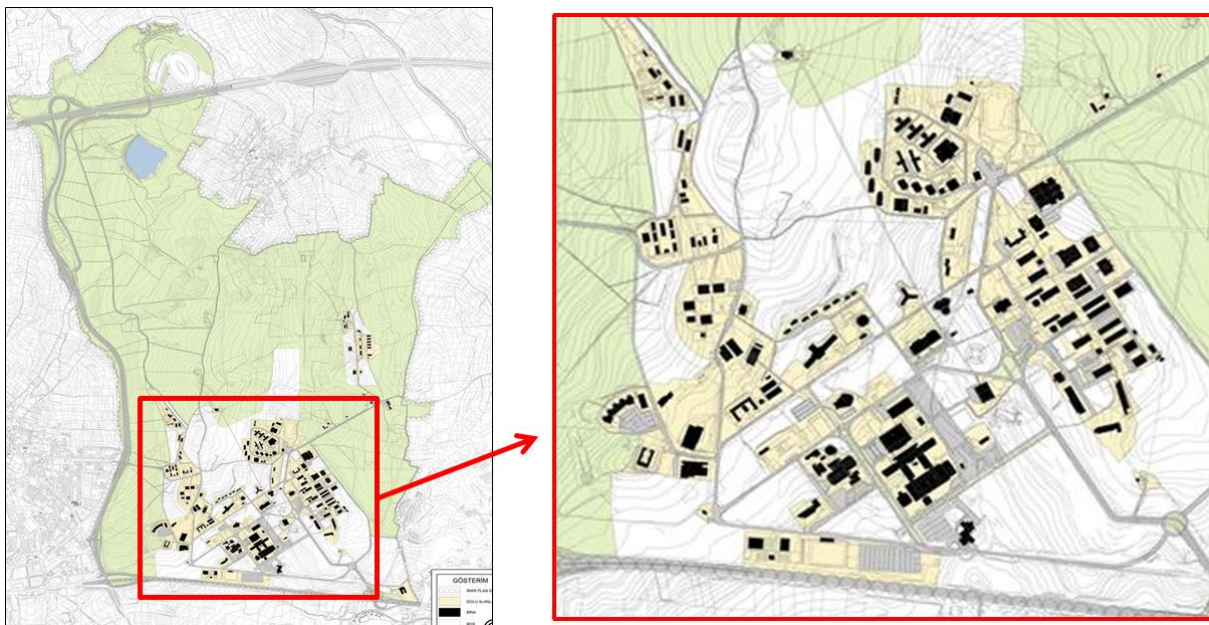


Figure 3. Buildings at the Main Campus of Bursa Uludag University (Black dots show the location of the buildings at the Main Campus)

Description:

The ratio of open space towards total area is calculated according to the following equation:

$$((1.5-1.6)/1.5) \times 100\%$$

$$((14411513-180203)/14411513) \times 100 = 98.7 \%$$

The ratio of open space towards total area = 98.7 %