



Evidence

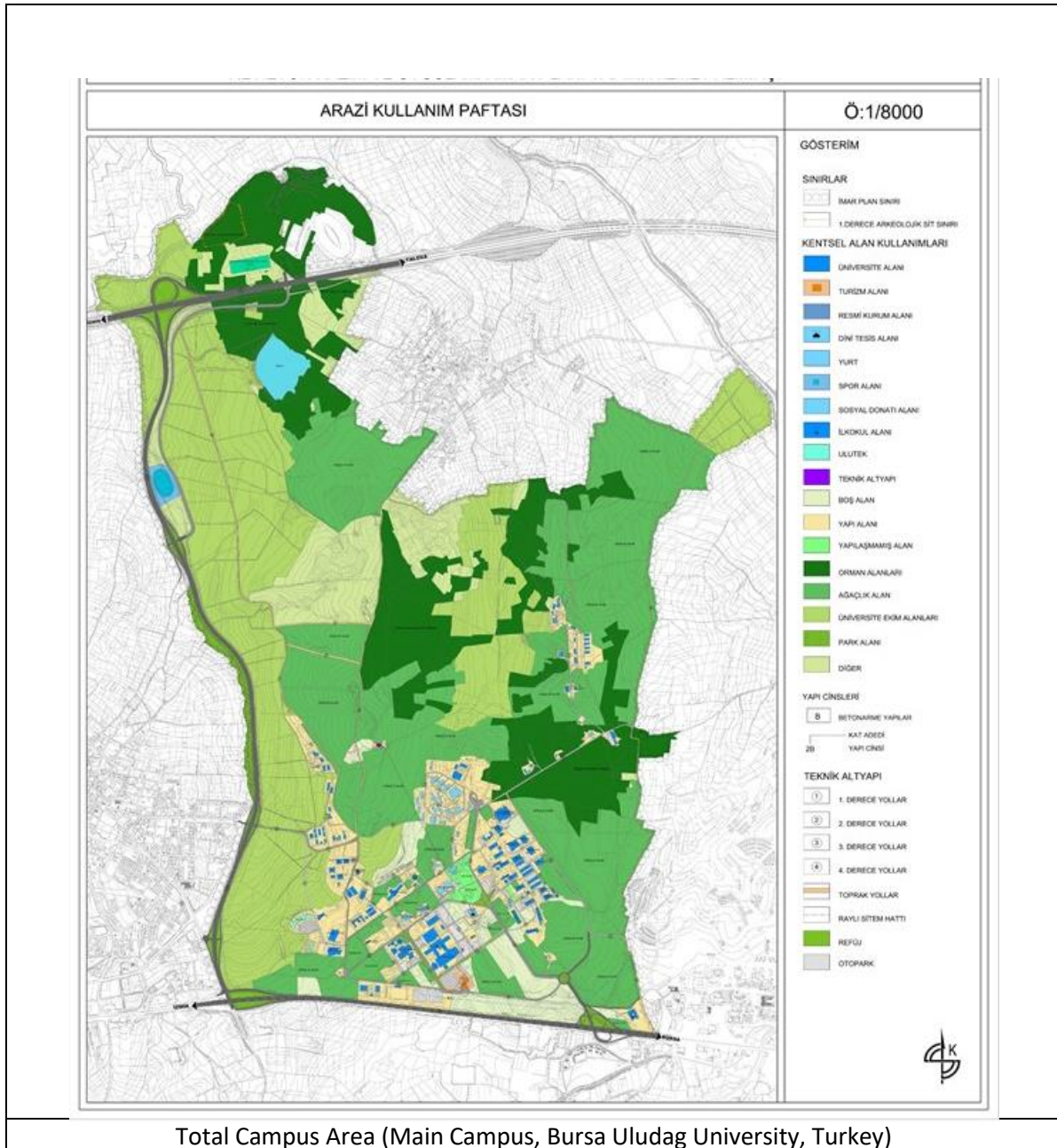
UI GreenMetric Questionnaire

University : Bursa Uludag University
Country : Turkey
Web Address : <http://www.uludag.edu.tr/english/default>
Web Address for Sustainability Office: <https://uludag.edu.tr/sustainability>

[1] Setting and Infrastructure (SI)

[1.5] Total Campus Area (meter²)

BUU Main Campus





Description:

The total area of the Main Campus is $14.41 \text{ km}^2 = 14411513.8 \text{ m}^2$

The distribution of the areas at the Main Campus of Bursa Uludag University is shown in Table 1 and Figure 1 below:

Table 1. Distribution of the Areas at the Main Campus of Bursa Uludag University

Category	Square kilometer (km ²)	Square meter (m ²)	% in the Total
Forests	7.98	7977737.0	55.4
Garden & Arable Field	3.74	3740000.0	26.0
Roads	0.28	281939.0	2.0
Settlement & Buildings	0.18	180203.0	1.3
Parking Area	0.13	131149.0	0.9
Irrigation Pond	0.09	90065.0	0.6
Sports Space	0.06	60918.0	0.4
Other	1.95	1949502.8	13.5
TOTAL	14.41	14411513.8	100.0

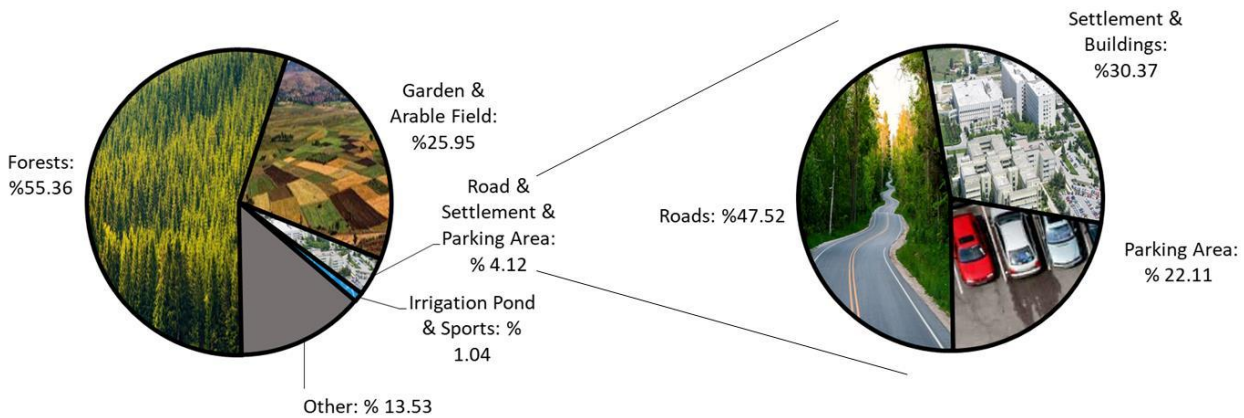


Figure 1. A Schematic View for the Distribution of the Areas at the Main Campus of Bursa Uludag University