



Certificate

This certificate is awarded to

Bursa Uludag University

as The 335th World's Most Sustainable University
in 2021 UI GreenMetric World University Rankings

Jakarta, 14 December 2021



Prof. Ari Kuncoro, S.E., M.A., Ph.D
Rector of Universitas Indonesia



Prof. Riri Fitri Sari, M.M., M.Sc
Chairperson of UI GreenMetric
World University Rankings



UNIVERSITAS
INDONESIA

Veritas, Probitas, Justitia



FACT FILE 2021

UI GREENMETRIC

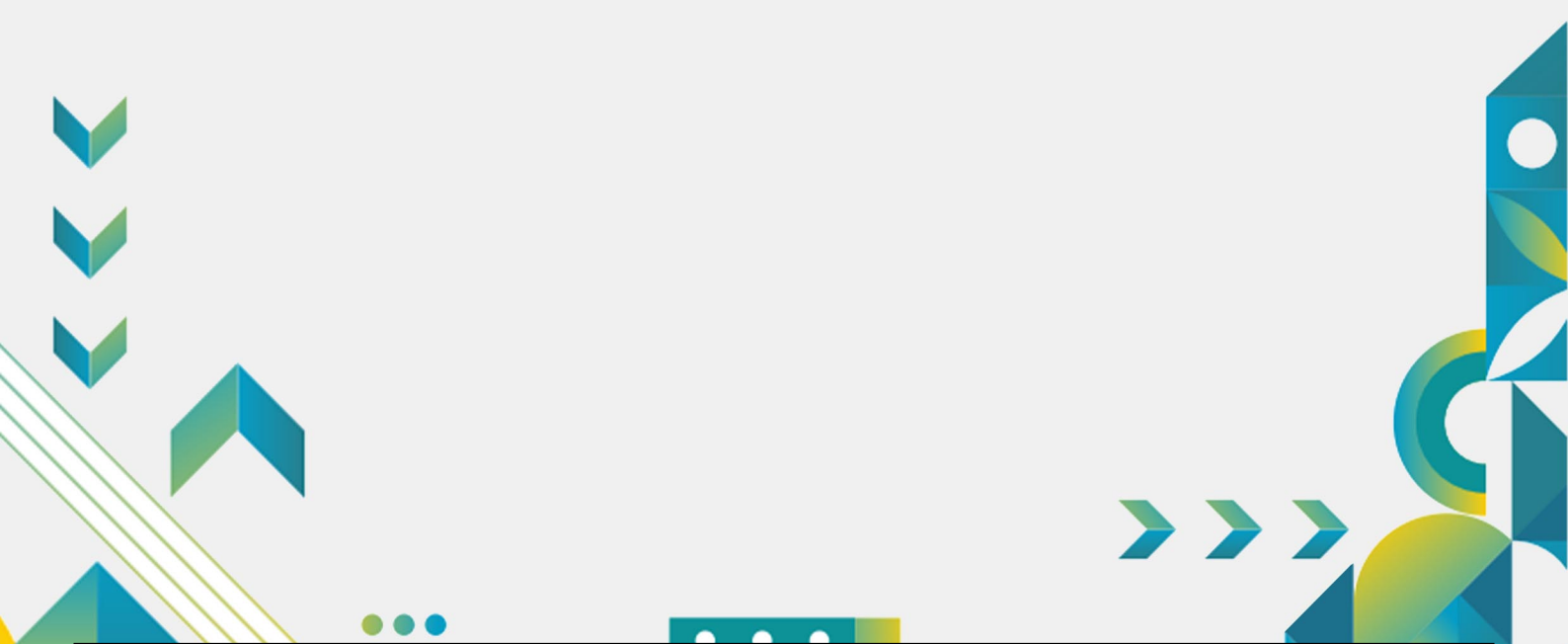
WORLD UNIVERSITY RANKINGS



BURSA ULUDAG UNIVERSITY

Turkey

Gorukle Campus 16059 Nilufer



UNIVERSITY PROFILE

Name : Bursa Uludag University

Established : 1970

Country : Turkey



1. VERIFIED DATA

Category	Point	Maximum Point	Percentage
Setting and Infrastructure (SI)	1,250	1500	83.33 %
Energy and Climate Change (EC)	625	2100	29.76 %
Waste (WS)	1,200	1800	66.67 %
Water (WR)	500	1000	50.00 %
Transportation (TR)	1,225	1800	68.06 %
Education (ED)	1,675	1800	93.06 %
Total Score	6,475	10000	64.75 %

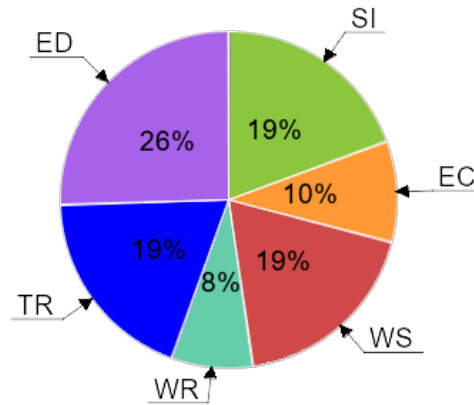


figure 1.1 Overall Score Diagram

2. RESULTS SUMMARY

World Ranking 335	SI Ranking 59	EC Ranking 743	WS Ranking 337
	WR Ranking 553	TR Ranking 352	ED Ranking 53

3. WORLD RANKINGS HISTORY

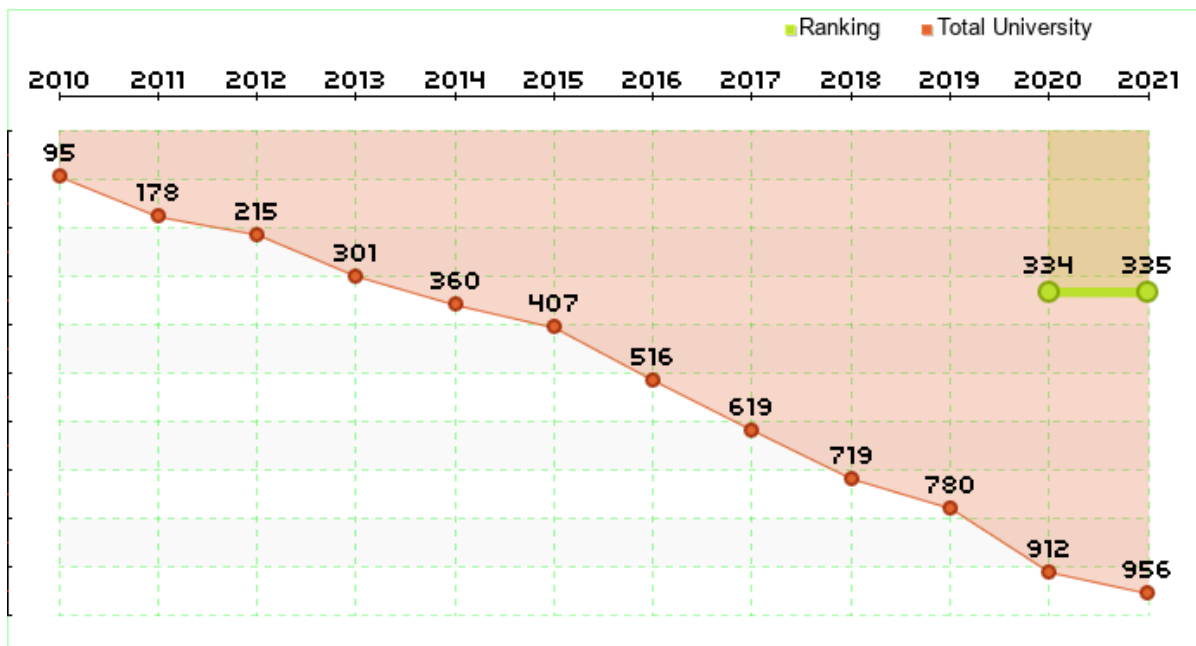


Figure 3.1 World Rankings History Diagram

4. RANKING IN TURKEY

Country Ranking 20	SI Ranking 3	EC Ranking 47	WS Ranking 27
	WR Ranking 36	TR Ranking 31	ED Ranking 3

5. RESULTS DETAIL

Setting and Infrastructure

Indicator		Score
SI.1	The ratio of open space area towards total area	200
SI.2	Area on campus covered in forest	100
SI.3	Area on campus covered in planted vegetation	100
SI.4	Area on campus for water absorbance	50
SI.5	The ratio of open space area divided campus population	200
SI.6	University budget for sustainability effort	200
SI.7	Percentage of operation and maintenance activities of building during Covid-19 pandemic	0
SI.8	Campus facilities for disabled, special needs and or maternity care	100
SI.9	Security and safety facilities	100
SI.10	Health infrastructure facilities for students, academics and administrative staff's wellbeing	100
SI.11	Conservation: plant, animal and wildlife, genetic resources for food and agriculture secured in either medium or long-term conservation facilities	100

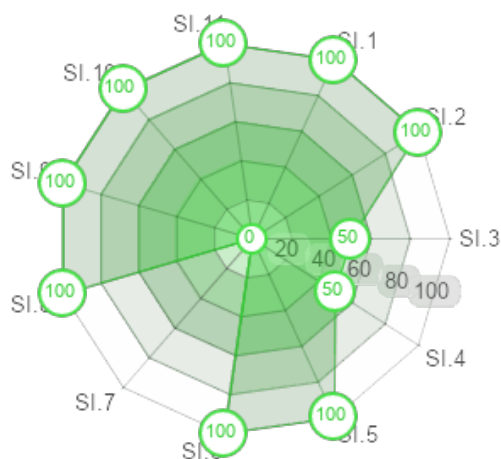


Figure 5.1 Percentage of Score to Maximum Score for Setting and Infrastructure

Energy and Climate Change

Indicator		Score
EC.1	Energy efficient appliances usage	50
EC.2	Smart building program implementation	0
EC.3	Number of renewable energy source in campus	75
EC.4	The total electricity usage divided by total campus population	150
EC.5	The ratio of renewable energy production towards total energy usage per year	0
EC.6	Element of green building implementation	50
EC.7	Greenhouse gas emission reduction program	50
EC.8	The ratio of total carbon footprint divided campus population	100
EC.9	Number of innovative program(s) during covid-19 pandemic	100
EC.10	Impactful university program(s) on climate change	50

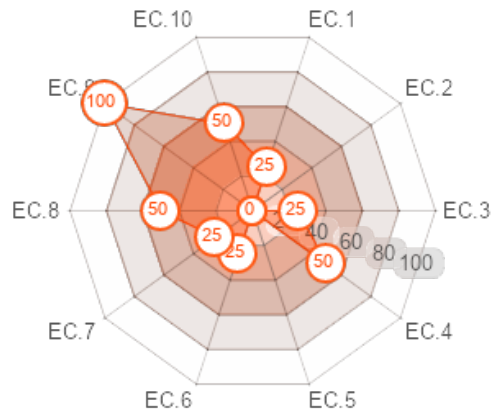


Figure 5.2 Percentage of Score to Maximum Score for Energy and Climate Change

Waste

Indicator		Score
WS.1	Recycling program for university waste	75
WS.2	Program to reduce the use of paper and plastic in campus	300
WS.3	Organic waste treatment	225
WS.4	Inorganic waste treatment	225
WS.5	Toxic waste treatment	300
WS.6	Sewerage disposal	75

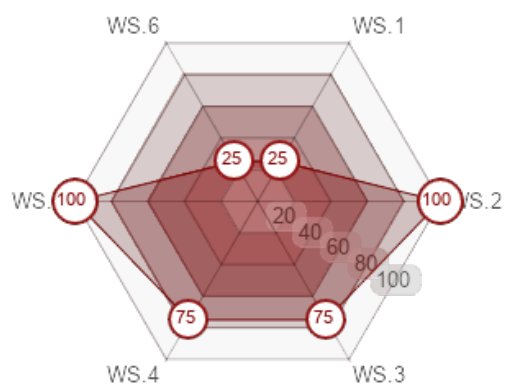


Figure 5.3 Percentage of Score to Maximum Score for Waste

Water

Indicator		Score
WR.1	Water conservation program	200
WR.2	Water recycling program	0
WR.3	The use of water efficient appliances	100
WR.4	Piped water consumed	0
WR.5	Percentage of additional handwashing and sanitation facilities during Covid-19 pandemic	200

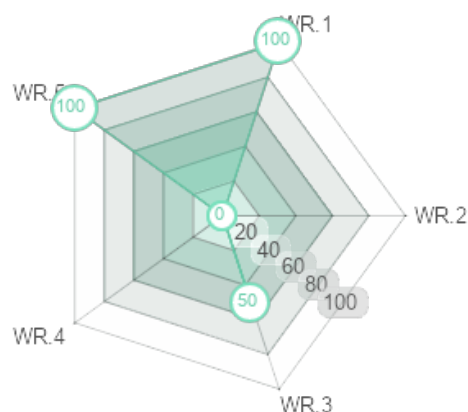


Figure 5.4 Percentage of Score to Maximum Score for Water

Transportation

Indicator		Score
TR.1	The ratio of total vehicles (cars and motorcycles) divided by total campus population	100
TR.2	Shuttle services	225
TR.3	Zero Emission Vehicles (ZEV) policy on campus	100
TR.4	The ratio of Zero Emission Vehicles (ZEV) divided by total campus population	100
TR.5	Ratio of parking area to total campus area	200
TR.6	Transportation program designed to limit or decrease the parking area on campus for the last 3 years	0
TR.7	Number of transportation initiatives to decrease private vehicles on campus	200
TR.8	Pedestrian policy on campus	300

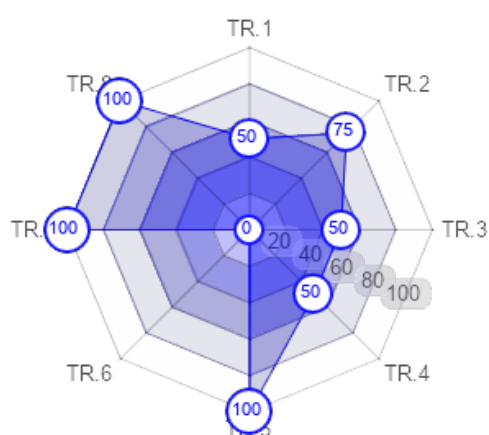


Figure 5.5 Percentage of Score to Maximum Score for Transportation

Education

Indicator		Score
ED.1	The ratio of sustainability courses towards total courses/modules	300
ED.2	The ratio of sustainability research funding towards total research funding	150
ED.3	Sustainability publications	200
ED.4	Sustainability events	200
ED.5	Sustainability student organizations	200
ED.6	Sustainability websites	150
ED.7	Sustainability report	75
ED.8	Sustainability report	100
ED.9	Sustainability report	100
ED.10	Sustainability report	100
ED.11	Sustainability report	100

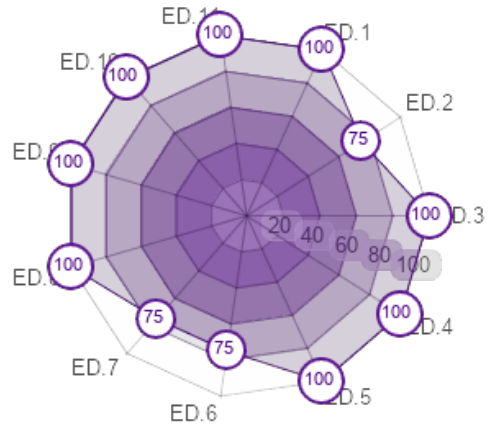


Figure 5.6 Percentage of Score to Maximum Score for Education



UI GREENMETRIC WORLD UNIVERSITY RANKINGS

About UI GreenMetric

UI GreenMetric World University Rankings is an annual publication of university rankings on sustainability. It is an initiative from the University of Indonesia that ranks universities around the world based on their commitment and actions towards sustainability. UI GreenMetric World University Rankings aims to increase university awareness towards sustainability.

History

UI GreenMetric World University Rankings is a non-profit initiative of University of Indonesia developed since 2010.

In 2009 the University of Indonesia hosted an International Conference on World University Rankings. The conference was attended by World University rankers such as Webometrics, HEEACT, and others. In 2010, Prof. Dr. Gumilar Rusliwa Somantri as Rector of the University of Indonesia at that time-initiated UI GreenMetric World University Rankings and appointed Prof. Riri Fitri Sari as the chairperson. Soon a team consisting of Junaidi, Budi Hartono, Allan Lauder, and Prof. Dr. Ir. Gunawan Tjahjono formulated UIGM Questionnaire and introduced UI Ranking to the world. In 2011, 11 new indicators in 5 categories have been added. Subsequently Education has been added as a new category in 2012. By the year 2015, a massive improvement was introduced including carbon footprint and a more systematic data collection. In 2016 an online based review and validation system has been set for the assessors.

UIGM took Policy into Action in 2016; Global Partnership for Sustainable Future in 2017; Universities, Impacts, and Sustainable Development Goals (SDGs) in 2018; Sustainable University in a Changing World: Lessons, Challenges and Opportunities in 2019; Universities' Responsibility for Sustainable Development Goals and World's Complex Challenges in 2020; and Universities, UI GreenMetric, and SDGs in the Time of Pandemic in 2021 as its annual themes. In 2021, 956 universities from 80 countries participate in the rankings.

To reach and coordinate more participating universities, UI GWURN was established in 2017 with a national coordinator in each country. To make it work, Junaidi formulated strategic framework for the network. Currently, there are 32 national coordinators in Asia, America, Africa and Europe. Each voluntarily organizes national workshop inviting other universities in their country. Since its establishment in 2010, it has been increasingly recognized as the first and only universities ranking on sustainability and has been used by participating universities to benchmark and do continuous improvement in the area of sustainability.

As a member of IREG, more activities and collaboration among participating universities are expected to achieve our common goal: sustainable university for sustainable future. UI GreenMetric itself developed its own ranking system by studying other ranking systems such as: The Times Higher Education World University Rankings (THE) sponsored by Thompson Reuters, the QS World University Rankings, the Academic Ranking of World Universities (ARWU) published by Shanghai Jiao Tong University (SJTU), and the Webometrics Ranking of World Universities (Webometrics), published by Cybermetrics Lab, CINDOC-CSIC in Spain.

Methodology

UI GreenMetric collects data through online questionnaire. All participant answered some questions for some period. After that, UI GreenMetric expert members and reviewers validate the answers based on evidence that participants provide. This year's categories and weighting of points are shown as follows. The specific indicators and their points awarded are shown in Table 3. Each indicator has been uniquely identified by a category code and a number (e.g., SI 5).

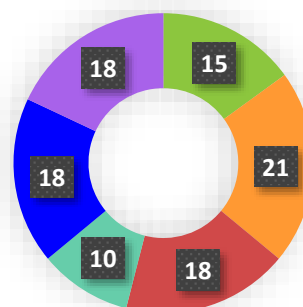
Table 1. UI GreenMetric Timeline

UI GreenMetric Timeline	
2010	UI GreenMetric published for 95 Universities
2011	UI GreenMetric added 11 new indicators within 5 categories
2012	Education became one of the categories
2015	Introducing Carbon Footprint and factfile document
2016	Focusing on university action towards sustainability
2017	UIGWURN established
2018	Focusing on SDGs and enlargement of memberships
2019	Improving questionnaire and data collection method
2020	Three new questions on social and economic impacts, such as (1) Startup for the green economy; (2) Public access to open spaces; (3) Community services
2021	Introducing social, cultural, economic, and pandemic aspects in the questionnaire

In our list, universities with the same total score will be ranked according to the highest weighted indicators, i.e firstly based on its Energy and Climate Change (EC) score, then based on the total score for Waste (WS), Transportation (TR), Education (ED). Subsequently it will be based on its Setting and Infrastructure (SI) score, and last will depend on its Water (WR) score.

Table 2. Categories used in the ranking and their weighting

No	Category	Percentage of Total Points (%)
1	Setting and Infrastructure (SI)	15
2	Energy and Climate Change (EC)	21
3	Waste (WS)	18
4	Water (WR)	10
5	Transportation (TR)	18
6	Education (ED)	18
	TOTAL	100



The specific indicators and their points awarded are shown in Table 3. Each indicator has been uniquely identified by a category code and a number (e.g., SI 5).

Table 3 Indicators and categories

No	CRITERIA	Point	Weighting
1	Setting and Infrastructure (SI)		15%
SI1	The ratio of open space area to total area	200*	
SI2	Total area on campus covered in forest vegetation	100*	
SI3	Total area on campus covered in planted vegetation	200*	
SI4	Total area on campus for water absorption besides the forest and planted vegetation	100*	
SI5	The total open space area divided by total campus population	200*	
SI6	Percentage of university budget for sustainability efforts	200	
SI7	Percentage of operation and maintenance activities of building during Covid-19 pandemic	100*	
SI8	Campus facilities for disabled, special needs and or maternity care	100*	
SI9	Security and safety facilities	100*	
SI10	Health infrastructure facilities for students, academics and administrative staff's wellbeing	100*	
SI11	Conservation: plant, animal and wildlife, genetic resources for food and agriculture secured in either medium or long-term conservation facilities	100*	
	Total	1500	
2	Energy and Climate Change (EC)		21%
EC1	Energy efficient appliances usage	200	
EC2	Smart building implementation	300	
EC3	Number of renewable energy sources on campus	300	
EC4	Total electricity usage divided by total campus' population (kWh per person)	300	
EC5	The ratio of renewable energy production divided by total energy usage per year	200	
EC6	Elements of green building implementation as reflected in all construction and renovation policies	200*	
EC7	Greenhouse gas emission reduction program	200	
EC8	Total carbon footprint divided by total campus' population (metric tons per person)	200*	
EC9	Number of innovative program(s) during covid-19 pandemic	100*	

EC10	Impactful university program(s) on climate change	100*	
	Total	2100	
3	Waste (WS)		18%
WS1	Recycling program for university's waste	300	
WS2	Program to reduce the use of paper and plastic on campus	300	
WS3	Organic waste treatment	300	
WS4	Inorganic waste treatment	300	
WS5	Toxic waste treatment	300	
WS6	Sewage disposal	300	
	Total	1800	
4	Water (WR)		10%
WR1	Water conservation program & implementation	200*	
WR2	Water recycling program implementation	200*	
WR3	Water efficient appliances usage	200	
WR4	Consumption of treated water	200	
WR5	Percentage of additional handwashing and sanitation facilities during Covid-19 pandemic	200*	
	Total	1000	
5	Transportation (TR)		18%
TR1	The total number of vehicles (cars and motorcycles) divided by total campus' population	200	
TR2	Shuttle services	300	
TR3	Zero Emission Vehicles (ZEV) policy on campus	200	
TR4	The total number of Zero Emission Vehicles (ZEV) divided by total campus population	200	
TR5	Ratio of ground parking area to total campus' area	200	
TR6	Program to limit or decrease the parking area on campus for the last 3 years (from 2018 to 2020)	200	
TR7	Number of initiatives to decrease private vehicles on campus	200	
TR8	Pedestrian path on campus	300	
	Total	1800	
6	Education and Research (ED)		18%
ED1	The ratio of sustainability courses to total courses/subjects	300	
ED2	The ratio of sustainability research funding to total research funding	200*	
ED3	Number of scholarly publications on sustainability	200*	
ED4	Number of events related to sustainability	200*	
ED5	Number of student organizations related to sustainability	200*	
ED6	University-run sustainability website	200	
ED7	Sustainability report	100	
ED8	Number of cultural activities on campus	100*	
ED9	Number of university program(s) to cope with Covid-19 pandemic	100*	
ED10	Number of sustainability community services project organized and/or involving students	100*	
ED11	Number of sustainability-related startups	100*	
	Total	1800	